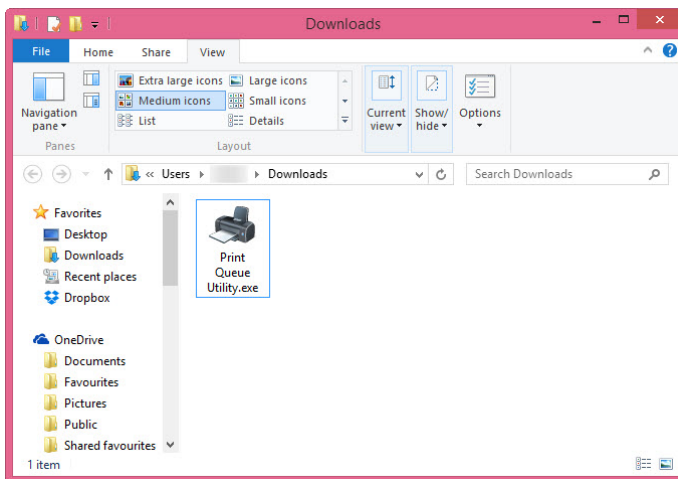


Satellite / Barn Printer - Windows 7/8/10 Setup Instruction

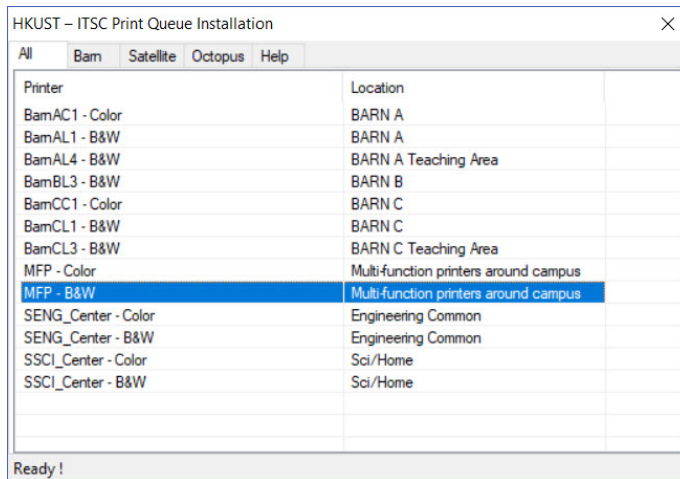
You can print to any printer in computer barn or satellite printer in the campus using your own Windows 7/8/10 notebook with the following installation steps:

If you would like to use the Multi-function printer (B&W or Color), please follow this setup guide and skip the following steps - <https://www.papercut.com/products/ng/mobility-print/manual/setting-up-your-devices/windows/>

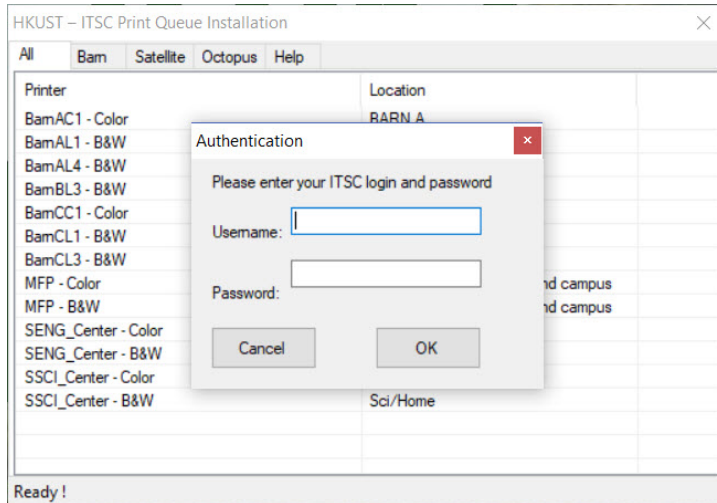
1. If you would like to use the SCI/Home, E2I common's printer, Download the program from our server with this link: <http://itscapps.ust.hk/pqueue/Print%20Queue%20Utility.exe>
2. You can move the program to the desktop for future use



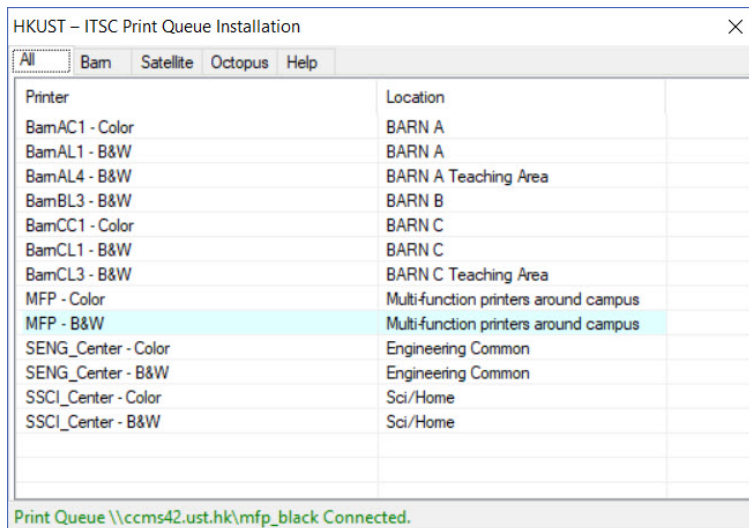
3. Open the program by double click on it and you will see a list of available printers can be added



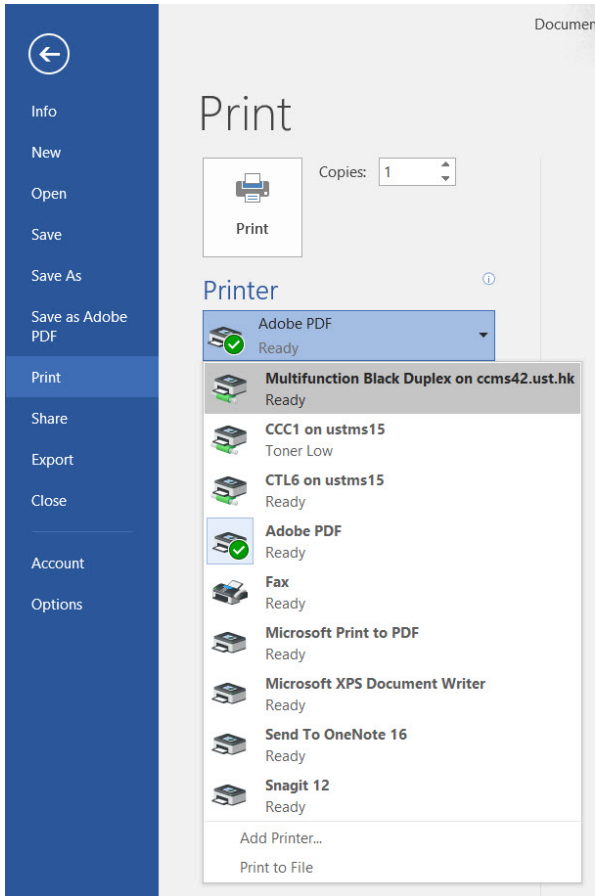
4. Double click the printer you would like to add and you will be asked for the ITSC login and password



- If you enter your password correctly, the printer will be added to your PC and you can use that from now on



- You can select that printer to print in any application and setup different printing properties as needed (duplex, 4 pages in 1 etc)



- You can also remove the printer using the utility by right-click the printer name and select "Remove Printer"

